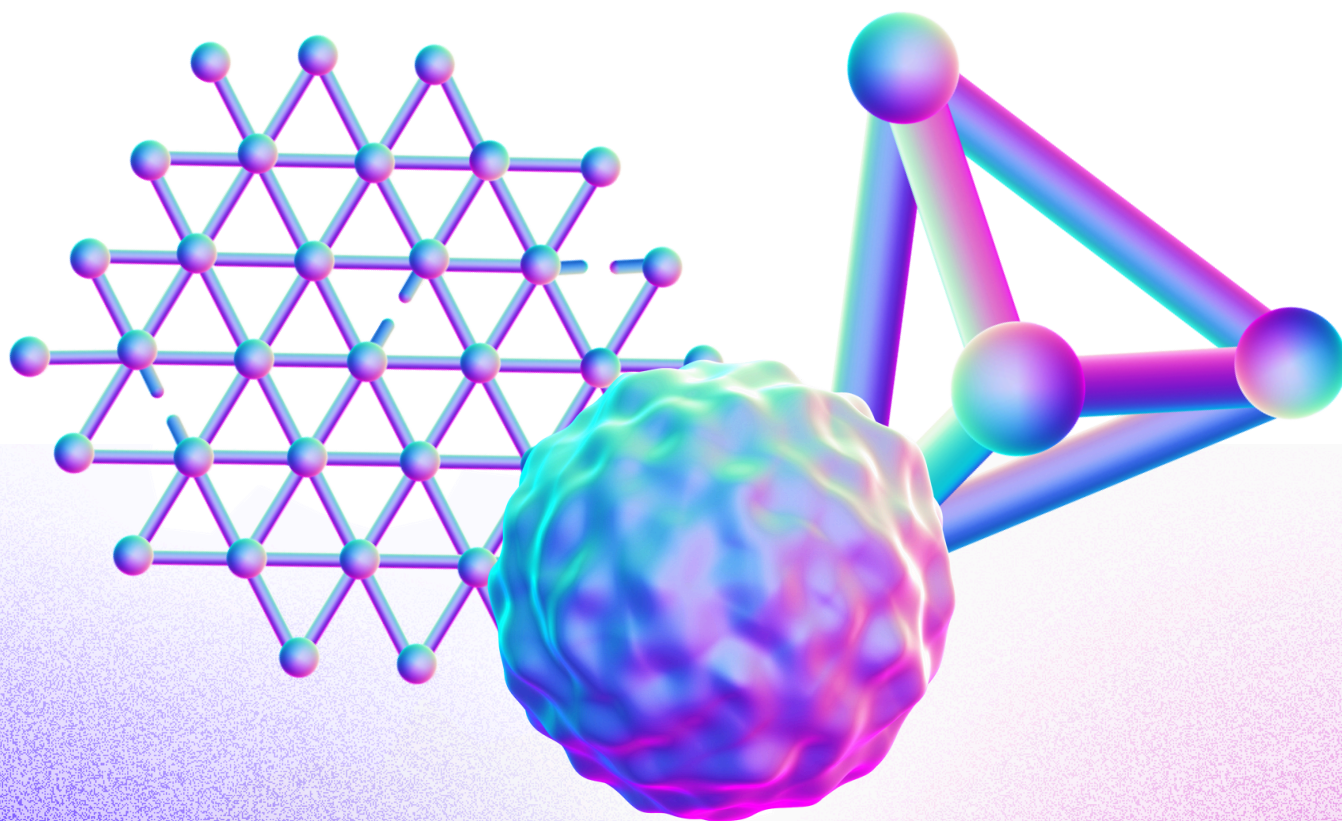


HANAMI

EU-Japan Alliance in HPC

HPC ALLIANCE FOR APPLICATIONS AND SUPERCOMPUTING INNOVATION: THE EUROPE - JAPAN COLLABORATION



PRESS KIT



Initiated by the Japan-EU Digital Partnership in order to strengthen cooperation with Japan. HANAMI implements the EU-Japan digital partnership HPC segment.

Support the Japan-EU Digital partnership by:

- Facilitating advances on the reciprocal access to EuroHPC and Japanese supercomputing resources for European and Japanese researchers.
- Addressing priority domains for the HPC collaboration: climate and weather modelling, biomedicine, and materials science.
- Co-developing European and Japanese applications of interest within the priority domains, as well as performance measuring, testing and optimisation for different architectures.

GENERAL INFORMATION

- Three years (2024 – 2027) - Started in March 2024 (until early 2027)
 - 5 million euros to fund European researchers
- Six European Centres of Excellence (CoE) for HPC applications on board (MaX, EoCoE, TREX, RAISE, EsiWACE and PerMedCoE)
- About 80 researchers are involved in HANAMI
- Three scientific work packages to develop HPC applications
 - In climate & weather, biomedical and materials sciences;
 - combined with expertise in HPC and Artificial Intelligence;
 - Seven thematic sub-projects;
- One Open Symposium per year
 - Building blocks for long-lasting collaboration, information & researcher & engineer exchanges, competence development, co-development of leading codes in key scientific areas;

MISSION

- 1 Address the priority domains that are climate and weather modelling, biomedical and material science of the HPC collaboration;
- 2 Advise and promote a sustainable collaboration between Europe and Japan for the HPC community;
- 3 Promote the exchange of researchers and engineers between Japan and the EU, and elaborate a roadmap for future actions to enhance cooperation.

OBJECTIVES

HANAMI wants to promote scientific projects involving both European and Japanese institutes, and will assist the researchers to access supercomputers in both Japan and Europe. HANAMI embeds leading research institutes and supercomputing centres to tackle exascale areas and beyond.

EXPECTED OUTCOMES

Tackling extreme-scale supercomputers: All the codes developed within HANAMI will tackle the most powerful supercomputers from the EU and Japan. Testing, performance measurement and optimisation of HANAMI codes are expected.

Joint science between EU and Japan teams: Joint collaboration involving both EU and Japan codes, involving key stakeholders of the HPC community as a whole.

Publications of **scientific discoveries** involving both European and Japanese teams of HANAMI.

Expansion of HANAMI partners through HANAMI high-level symposia.

Recommendations by HANAMI towards **policy makers** (in Europe and in Japan) to inform and promote HANAMI collaboration and explore all the options for HANAMI's sustainability

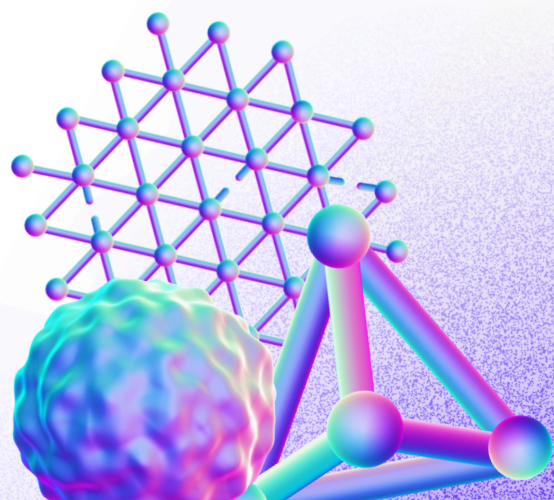
EUROPEAN PARTNERS



JAPANESE PARTNERS



東京大学 先端科学技術研究センター
Research Center for Advanced Science and Technology
The University of Tokyo



COMMUNICATION RESOURCES

- [General Presentation](#);
- [Flyer](#);
- [Booklet](#);
- [Kick-Off Video](#);

COMMUNICATION CHANNELS



[Website](#)



[LinkedIn](#)



[X](#)



[YouTube](#)



[Bluesky](#)

COMMUNICATION CONTACTS

Paula Rodrigues

paula.c.rodrigues@inesctec.pt

INESC TEC

High-Assurance Software Laboratory