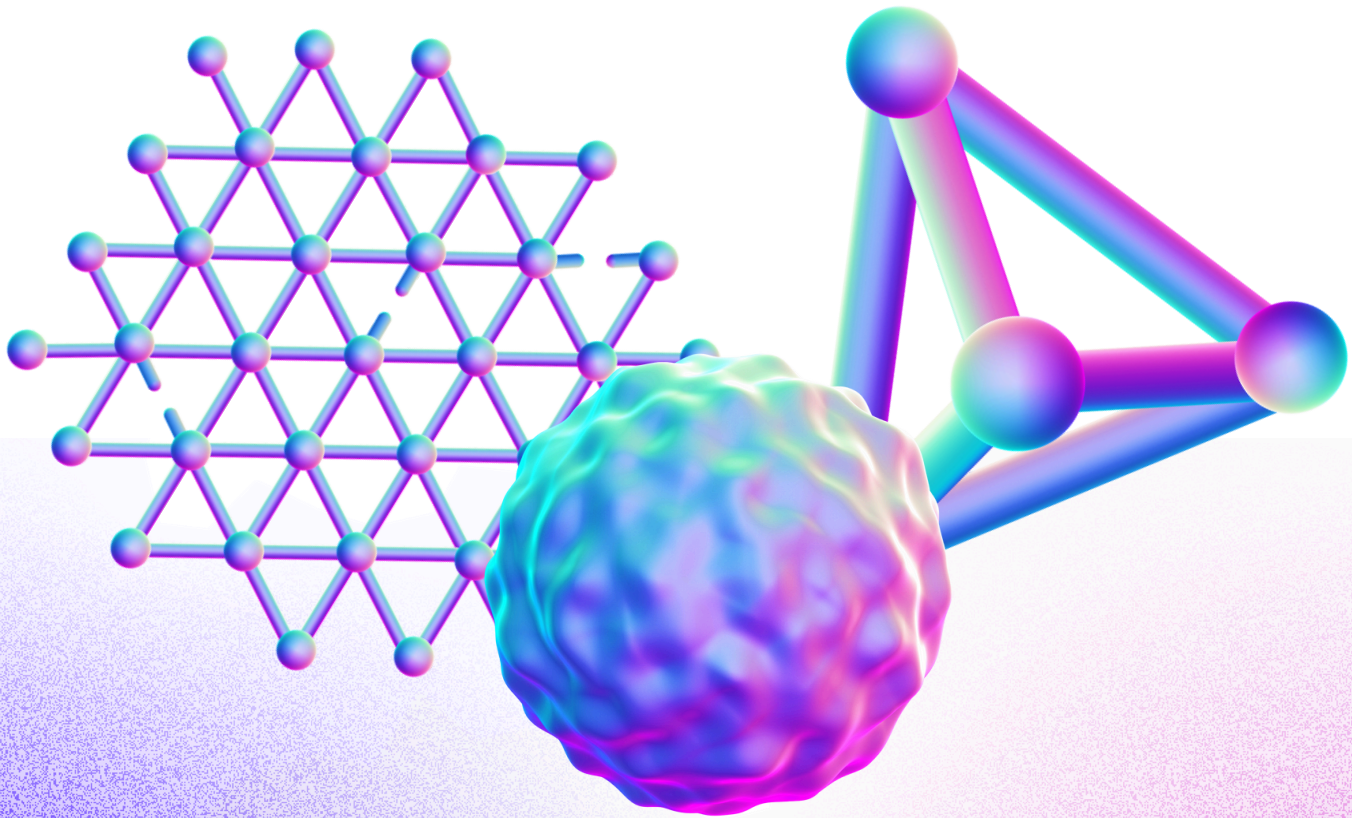


HANAMI

EU-Japan Alliance in HPC

HPC ALLIANCE FOR APPLICATIONS AND SUPERCOMPUTING INNOVATION: THE EUROPE - JAPAN COLLABORATION



Initiated by the Japan-EU Digital Partnership in order to strengthen cooperation with Japan. HANAMI implements the EU-Japan digital partnership HPC segment.

Support the Japan-EU Digital partnership by:

- Facilitating advances on the reciprocal access to EuroHPC and Japanese supercomputing resources for European and Japanese researchers.
- Addressing priority domains for the HPC collaboration: climate and weather modeling, biomedicine, and materials science.
- Co-developing European and Japanese applications of interest within the priority domains, as well as performance measuring, testing and optimization for different architectures.

GENERAL INFORMATION

- Three years (2024 – 2027) - Started in March 2024 (until early 2027)
 - 5 Millions euros to fund the European researchers
- The French Alternative Energies and Atomic Energy Commission (CEA) is the coordinator of the consortium that includes 14 organizations from 9 European countries and 11 Japanese institutions +;
- Six European Centres of Excellence (CoE) for HPC applications on board (MaX, EoCoE, TREX, RAISE, EsiWACE and PerMedCoE)
- About 80 researchers involved in HANAMI
- Three scientific work packages to develop HPC applications
 - In climate & weather, biomedical and materials sciences;
 - combined with expertise in HPC and Artificial Intelligence;
 - Seven thematic sub-projects;
- One Open Symposium per year
 - Building blocks for long-lasting collaboration, information & researcher & engineer exchanges, competence development, co-development of leading codes in key scientific areas;
- Total funding of 5 million euros, through Horizon Europe.

EXPECTED OUTCOMES

- HANAMI is strengthening the EU-Japan collaboration around HPC by gathering key research institutes and high-end supercomputers in one environment to tackle exascale challenges for climate, biomedical and material science.
- HANAMI promotes open source applications and software: HANAMI is paying attention to community building and best practices that can benefit to the HPC community.
- HANAMI pave the way for a sustainable collaboration between EU and Japan around HPC: The consortium is taking care of Gender & Diversity issue and promotion of HPC culture towards young students.
 - HANAMI promotes young researchers within EU and Japan community. We support young students/researchers to visit Japanese laboratories and vice-versa (when a call on Japanese offices is opened);

KNOW MORE

